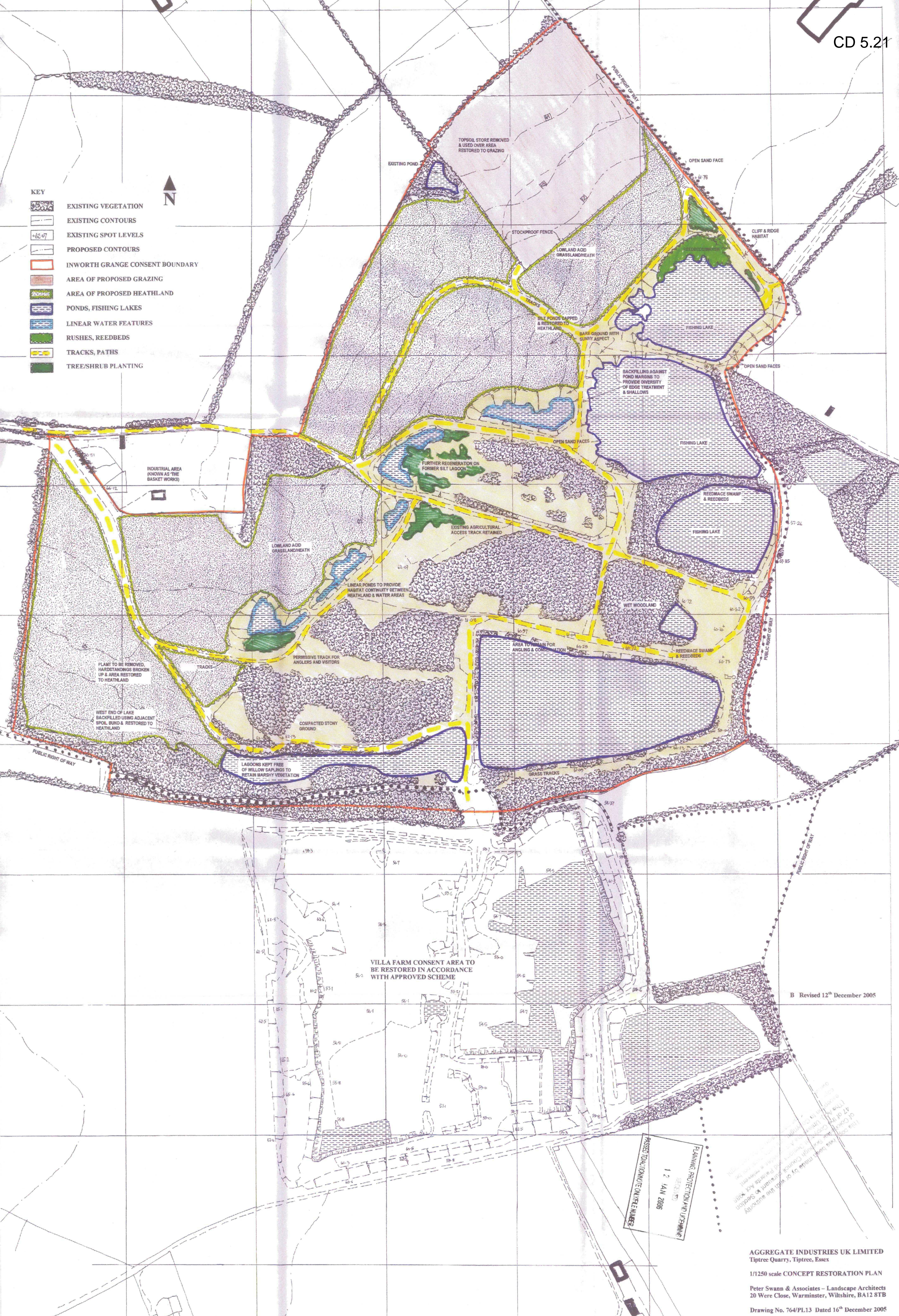


- KEY**
- EXISTING VEGETATION
 - EXISTING CONTOURS
 - EXISTING SPOT LEVELS
 - PROPOSED CONTOURS
 - INWORTH GRANGE CONSENT BOUNDARY
 - AREA OF PROPOSED GRAZING
 - AREA OF PROPOSED HEATHLAND
 - PONDS, FISHING LAKES
 - LINEAR WATER FEATURES
 - RUSHES, REEDBEDS
 - TRACKS, PATHS
 - TREE/SHRUB PLANTING



VILLA FARM CONSENT AREA TO BE RESTORED IN ACCORDANCE WITH APPROVED SCHEME

B Revised 12th December 2005

PLANNING PROTECTION AND DEDICATION
 1 2 JAN 2005
 PRESENTED TO COUNCIL ON THE NUMBER

This plan has been made by or with the assistance of the Planning Department of the Council and is subject to the provisions of the Planning Act 1990.